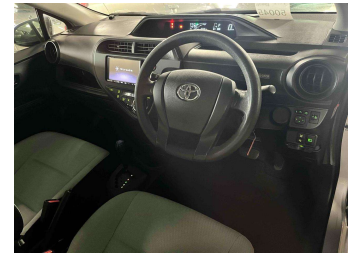
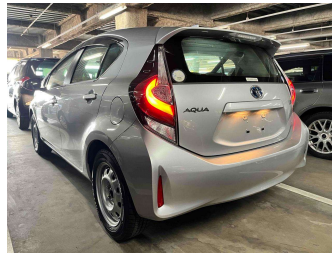
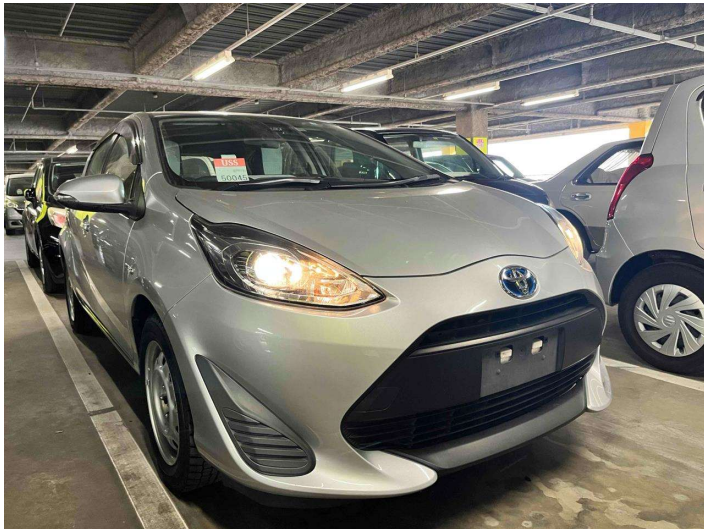



2019 Toyota AQUA HYBRID TSS



Purchase Price **\$14,950**
Includes GST, Registration & Licensing

Indicative repayments
\$75.22 per week*
Based on a 48 month term & 20% deposit.
Total repayments (208) = **\$18,636.67**



Gain peace of mind with
Mechanical Breakdown
Insurance. **Ask us how.**



Top features

- » AA Appraised
- » Air Conditioning
- » Chain Driven Engine (no cambelt to replace)
- » Collision Avoidance
- » Electric Mirrors
- » Lane Departure Warning
- » Monsoons
- » Remote central locking
- » Wheel Covers

Body Style
5 door, Hatchback

Odometer
83,580 km

Engine
1500 cc, Hybrid

Fuel Type
Hybrid

Transmission
Automatic, Front Wheel

Wheels
15", Factory Alloys

VIN
-

Interior
Grey

Safety
-

Reg No.

-

Ext Colour
Silver

History
Ex-Overseas

Seats
5 seats, Cloth

CO2 Emissions

-

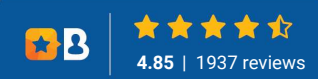
Energy Economy

-

Stock ID: 5694



George Masters Motors | Phone 06 650 7136 | Email george@gmm.co.nz
1001 Karamu Road North, Mayfair, Hastings 4122, New Zealand
www.gmm.co.nz



* George Masters Motors is not a lender nor a financial adviser. Any amounts displayed should not be seen as an offer of finance or taken as financial advice. The interest rate, fees and loan term used in this calculation may not actually represent those available from lenders. Actual interest rates, fees and loan terms will vary per lender and are typically based on an assessment of your credit risk and responsible lending criteria. Any repayment amounts displayed are indicative only and have been calculated using several other indicative inputs. The interest rate used in this calculation is an arbitrary 12.95%, however exact interest rates vary per lender. The term of the loan used in this calculation is 48 month. Exact terms available vary per lender although options typically include 6, 12, 18, 24, 36, 48 and 60 months. This calculation also includes two typical mandatory fees charged by lenders. These are an account admin fee of \$3.00 per month (other payment frequencies may be available) and a one-off establishment fee of \$90.00. Typically, this fee can be paid upfront or, as in this calculation, be capitalised over the contract term, ie. included in the loan amount. These fees can vary per lender and other non-mandatory fees and charges may also apply. The total amount of repayments has been calculated by multiplying 208 weekly repayments (based on a 48 month term) by the weekly repayment amount of \$75.22 which equals \$18,636.67. This calculator does not consider any of your own personal circumstances and we strongly suggest you seek budgeting advice prior to committing to any loan contract. Responsible lending criteria and lender terms and conditions will likely apply to any finalised loan contract. Proof of security and/or vehicle insurance may also be required before proceeding.